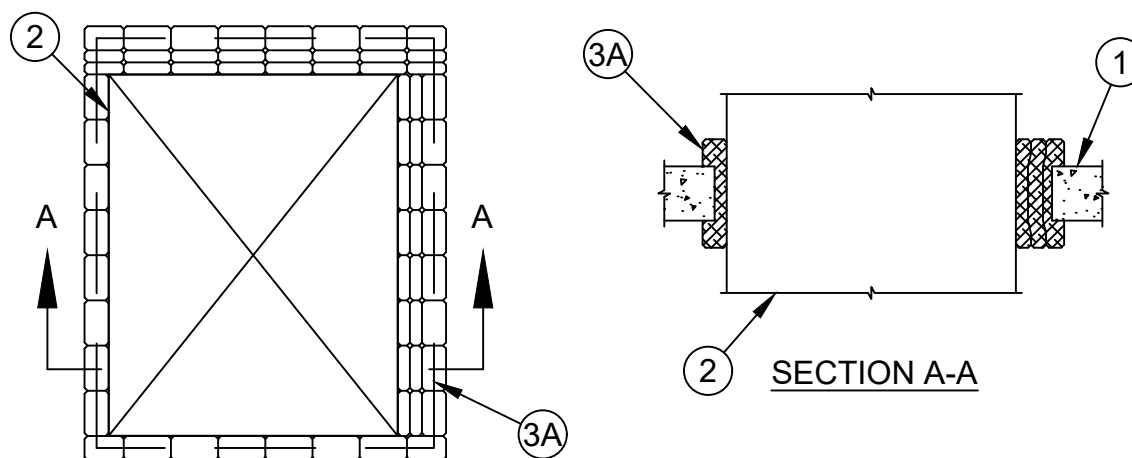




ANSI/UL1479 (ASTM E814)	CAN/ULC S115
F Rating - 3 Hr	F Rating - 3 Hr
T Rating - 1-1/4 Hr	FT Rating - 1-1/4 Hr
	FH Rating - 3 Hr
	FTH Rating - 1-1/4 Hr



1. **Floor or Wall Assembly** - Min 4-1/2 in. (114 mm) thick reinforced lightweight or normal weight (100-150 pcf or 1600-2400 kg/m³) concrete. Wall may also be constructed of any UL Classified **Concrete Blocks***. Max area of opening 952 sq in. (0.61 m²) with a max dimension of 34 in. (864 mm).
See **Concrete Blocks** (CAZT) category in Fire Resistance Directory for names of manufacturers.
2. **Steel Duct** - Max 24 by 30 in. (610 by 762 mm) No. 24 gauge (or heavier) steel duct to be installed concentrically or eccentrically within opening. Annular space between duct and periphery of opening shall be min 1 in. (25 mm) to max 3 in. (76 mm). Duct to be rigidly supported on both sides of floor or wall assembly.
- 2A. **Coated Ducts*** - As an alternate to Item 2, max 24 by 30 in. (610 by 762 mm) steel duct coated with BW11 coating material. Duct sections shall be assembled using bolted flanges or SMACNA approved Transverse Joint Reinforcements. Annular space between duct and periphery of opening shall be min 1 in. (25 mm) to max 3 in. (76 mm). Duct to be rigidly supported on both sides of floor or wall assembly.

FIRESPRAY INTERNATIONAL LTD - FLAMEBAR BW11 fire rated ductwork

3. **Firestop System** - The firestop system shall consist of the following:
 - A. **Fill, Void or Cavity Material* - Pillows** - Nom 9 in. (229 mm) long by 4 to 6 in. (102 to 152 mm) wide by 1 to 3 in. (25 to 76 mm) thick plastic covered intumescent pillows. Pillows to be installed lengthwise through opening and positioned to extend an equal distance from the approximate center of the floor or wall thickness. Pillows tightly packed into opening to fill the annular space between the steel duct and the periphery of the opening.
SPECIFIED TECHNOLOGIES INC - SpecSeal Firestop Pillows
 - B. **Fill, Void or Cavity Material* - Putty** - (Not Shown) - After installation of pillows (Item 3A), putty applied to seal any voids between or around the pillows on the top surface of the floor or on both sides of the wall assembly.
SPECIFIED TECHNOLOGIES INC - SpecSeal Putty

* Indicates such products shall bear the UL or cUL Certification Mark for jurisdictions employing the UL or cUL Certification (such as Canada), respectively.



Specified Technologies Inc. 210 Evans Way Somerville, NJ 08876

Reproduced courtesy of Underwriters Laboratories, Inc.
Created or Revised: July 24, 2017

(800)992-1180 • (908)526-8000 • FAX (908)231-8415 • E-Mail:techserv@stifirestop.com • Website:www.stifirestop.com



C-AJ-7171
PAGE 1 OF 1