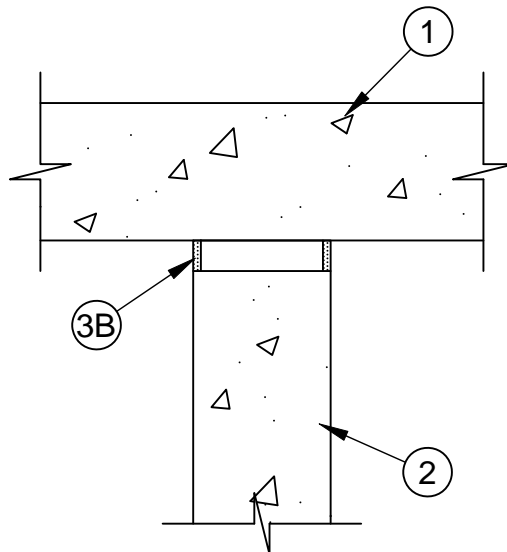


System No. HW-D-0780



| | |
|---|---|
| ANSI/UL2079 | CAN/ULC S115 |
| Assembly Rating - 2 Hr | F Rating - 2 Hr |
| Max Joint Width - 1 In. | FT Rating - 2 Hr |
| Class II Movement Capabilities - 12.5% Compression or Extension | FH Rating - 2 Hr |
| L Rating At Ambient - Less Than 1 CFM/lin ft | FTH Rating - 2 Hr |
| L Rating At 400 F - Less Than 1 CFM/lin ft | Max Joint Width - 25 mm |
| | Class II Movement Capabilities - 12.5% Compression or Extension |
| | L Rating At Ambient - Less Than 1.55 L/s/m |
| | L Rating At 204 C - Less Than 1.55 L/s/m |



1. **Floor Assembly** - Min 4-1/2 in. (114 mm) thick reinforced lightweight or normal weight (100-150 pcf or 1600-2400 kg/m³) structural concrete.
2. **Wall Assembly** - Min 4-1/2 in. (114 mm) thick reinforced lightweight or normal weight (100-150 pcf or 1600-2400 kg/m³) structural concrete. Wall may also be constructed of any UL Classified **Concrete Blocks***. See **Concrete Blocks** (CAZT) category in the Fire Resistance Directory for names of manufacturers.
3. **Joint System** - Max separation between bottom of floor and top of wall (at time of installation of joint system) is 1 in. (25 mm). The joint system is designed to accommodate a max 12.5 percent compression or extension from its installed width. The joint system shall consist of the following:
 - A. **Forming Material** - (Optional, Not Shown) - Open or closed cell polyethylene or polyurethane foam backer rod, mineral wool batt insulation or glass fiber insulation used as a form to prevent the leakage of fill material. Packing material to be recessed from both surfaces of the wall as required to accommodate the required thickness of fill material.
 - B. **Fill, Void or Cavity Material* - Sealant** - Min 1/4 in. (6 mm) thickness of fill material applied within the joint, flush with both surfaces of wall.

SPECIFIED TECHNOLOGIES INC - SpecSeal ES Sealant

* Indicates such products shall bear the UL or cUL Certification Mark for jurisdictions employing the UL or cUL Certification (such as Canada), respectively.



Specified Technologies Inc. 210 Evans Way Somerville, NJ 08876

Reproduced courtesy of Underwriters Laboratories, Inc.
Created or Revised: January 18, 2017

(800)992-1180 • (908)526-8000 • FAX (908)231-8415 • E-Mail:techserv@stifirestop.com • Website:www.stifirestop.com



HW-D-0780
PAGE 1 OF 1