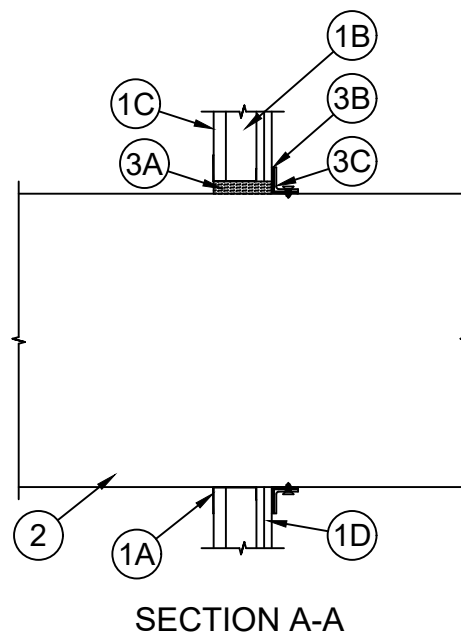
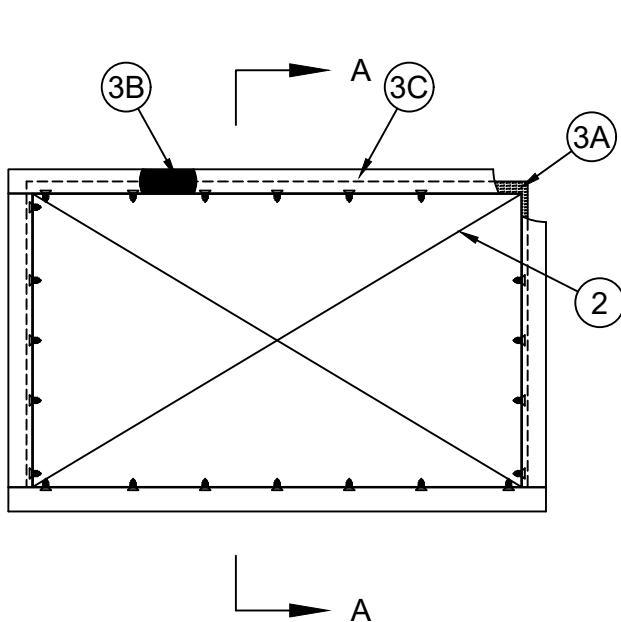




ANSI/UL1479 (ASTM E814)	CAN/ULC S115
F Ratings - 1 and 2 Hr (See Item 1)	F Ratings - 1 and 2 Hr (See Item 1)
T Ratings - 1/4 Hr	FT Ratings - 1/4 Hr
	FH Ratings - 1 and 2 Hr (See Item 1)
	FTH Ratings - 1/4 Hr



- Wall Assembly** - The 1 or 2 hr fire-rated gypsum board/stud shaft wall assembly shall be constructed of the materials and in the manner specified in the individual U400, V400 or W400 Series Wall and Partition Designs in the UL Fire Resistance Directory and shall incorporate the following construction features:
 - Steel Runners** - Floor and ceiling "J"-shaped runner, min 2-1/2 in. (64 mm) wide, fabricated from min 24 MSG galv steel in accordance with the individual wall design. Additional "J" runners to be used as the horizontal members to frame the opening.
 - Steel Studs** - "C-H" or "C-T" shaped studs, min 2-1/2 in. (64 mm) wide by 1-1/2 in. (38 mm) deep, fabricated from min No. 25 gauge (0.6 mm thick) galv steel, spaced max 24 in. (610 mm) OC. Additional "C-H" or "C-T" shaped studs shall be used as the vertical framing members to completely frame around opening.
 - Gypsum Board*** - 1 in. (25 mm) thick, 24 in. (610 mm) wide gypsum liner panels installed vertically. Max area of opening in gypsum liner panel is 7.40 sq ft. (0.69 m²) with a max dimension of 41 in. (1.04 m).
 - Gypsum Board*** - 1/2 in. or 5/8 in. (13 or 16 mm) thick, 48 in. (1.2 m) wide gypsum boards. The gypsum board type, thickness, number of layers, fastener type and sheet orientation shall be as specified in the individual Wall and Partition Design. Max area of opening in gypsum board is 7.40 sq ft. (0.69 m²) with a max dimension of 41 in. (1.04 m).

The F and FH Ratings of the firestop system are equal to the hourly fire rating of the wall in which it is installed.
- Steel Duct** - Max 24 by 40 in. (0.61 by 1.02 m) No. 28 gauge (or heavier) steel duct to be installed either concentrically or eccentrically within the opening. The annular space between the steel duct and the periphery of the opening shall be min 0 in. (point contact) to max 1 in. (25 mm). The duct shall be constructed and reinforced in accordance with SMACNA construction standards. Steel duct to be rigidly supported on both sides of wall assembly.



Specified Technologies Inc. 210 Evans Way Somerville, NJ 08876

Reproduced courtesy of Underwriters Laboratories, Inc.

Created or Revised: December 11, 2017

(800)992-1180 • (908)526-8000 • FAX (908)231-8415 • E-Mail:techserv@stifirestop.com • Website:www.stifirestop.com



W-L-7238
PAGE 1 OF 2

3. **Firestop System** - The firestop system shall consist of the following items:

- A. **Packing Material** - Min 4 pcf (64 kg/m³) mineral wool batt insulation firmly packed into opening as a permanent form. Packing material to extend throughout thickness of wall.
- B. **Fill, Void or Cavity Material*** - Factory-supplied intumescent gasket installed and nominally centered to completely cover the outer surfaces of the steel retaining angles (Item 3C) as specified in the accompanying installation instructions.

SPECIFIED TECHNOLOGIES INC - FyreFlange™ Firestop Gasket

- C. **Steel Retaining Angles** - Nom 2 by 2 by 0.035 in. (51 by 51 by 0.9 mm) thick steel angles to be installed flush to max 1/4 in. (6 mm) from finished side of the wall. Firestop angles shall be attached to the steel duct on finished side of the wall with min No. 10 self-drilling, self-tapping steel screws spaced max 6 in. (152 mm) OC.
- D. **Firestop Device*** - (Optional, Not Shown) - A corner clip may be installed at each corner of the duct on finished side of the wall. Corner clips shall be attached to the steel duct and to the perpendicular leg of the abutting firestop angle with two min No. 10 self-drilling, self-tapping steel screws.

SPECIFIED TECHNOLOGIES INC - FyreFlange™ Corner Clip

- E. **Firestop Device*** - (Not Shown) - As an option to the intumescent gasket and steel angles (Item Nos. 3B and 3C), a firestop device consisting of 2 by 2 by 0.035 in. (51 by 51 by 0.9 mm) thick steel angles furnished with an intumescent gasket material and corner clips (Item 3D) may be used. Firestop angles to be installed flush to max 1/4 in. (6 mm) from finished side of the wall in accordance with the accompanying installation instructions. Firestop angles shall be attached to the steel duct on finished side of wall with min No. 10 self-drilling, self-tapping steel screws spaced max 6 in. (152 mm) OC. Optional, corner clip may be installed at each corner of the duct on finished side of the wall. When installed, corner clips are attached to the steel duct and to the perpendicular leg of the abutting firestop angle with two min No. 10 self-drilling, self-tapping steel screws. Two short lengths of firestop angle may be joined into a single length of the required size using a splice angle in accordance with the accompanying instructions. When the max duct size is 24 by 40 in. (0.61 by 1.02 m), the corner clips are optional.

SPECIFIED TECHNOLOGIES INC - FyreFlange™ Firestop Angle, FyreFlange™ Corner Clip, FyreFlange™ Splice Angle

* Indicates such products shall bear the UL or cUL Certification Mark for jurisdictions employing the UL or cUL Certification (such as Canada), respectively.



Specified Technologies Inc. 210 Evans Way Somerville, NJ 08876

Reproduced courtesy of Underwriters Laboratories, Inc.

Created or Revised: December 11, 2017

(800)992-1180 • (908)526-8000 • FAX (908)231-8415 • E-Mail:techserv@stifirestop.com • Website:www.stifirestop.com



W-L-7238

PAGE 2 OF 2