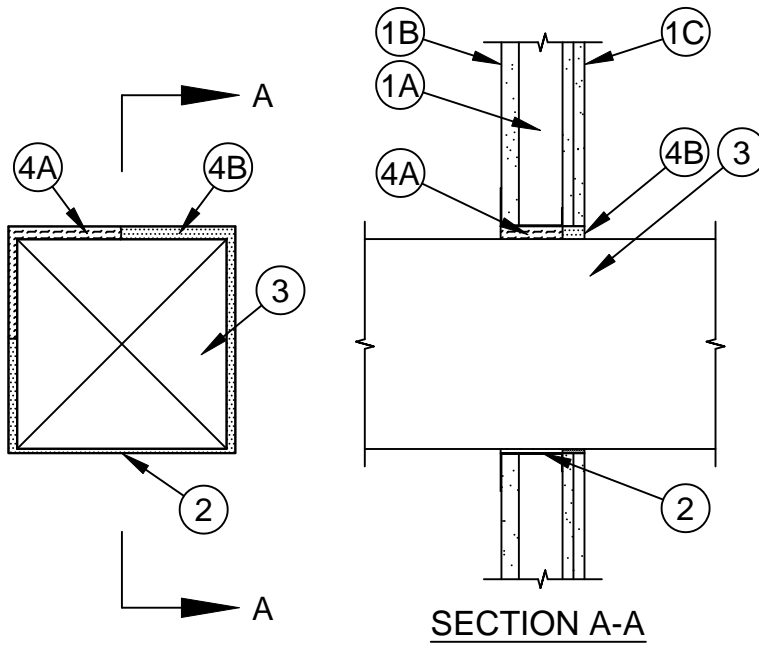


System No. W-L-7252



ANSI/UL1479 (ASTM E814)	CAN/ULC S115
F Ratings - 1 and 2 Hr (See Item 1)	F Ratings - 1 and 2 Hr (See Item 1)
T Ratings - 0 Hr	FT Ratings - 0 Hr
	FH Ratings - 1 and 2 Hr (See Item 1)
	FTH Ratings - 0 Hr



1. **Wall Assembly** - The 1 or 2 hr fire-rated gypsum board/stud shaft wall assembly shall be constructed of the materials and in the manner specified in the individual U400 Series Wall and Partition Designs in the UL Fire Resistance Directory and shall incorporate the following construction features:
 - A. **Steel Studs** - "C-H" or "C-T" shaped studs, min 2-1/2 in. (64 mm) wide by 1-1/2 in. (38 mm) deep, fabricated from min No. 25 gauge (0.6 mm thick) galv steel, spaced max 24 in. (610 mm) OC.
 - B. **Gypsum Board*** - 1 in. (25 mm) thick, 24 in. (610 mm) wide gypsum liner panels installed vertically. Max area of opening in gypsum liner panel is 169 sq in. (1090 cm²) with a max dimension of 13 in. (330 mm).
 - C. **Gypsum Board*** - 1/2 in. or 5/8 in. (13 or 16 mm) thick, 48 in. (1.2 m) wide gypsum boards. The gypsum board type, thickness, number of layers, fastener type and sheet orientation shall be as specified in the individual Wall and Partition Design. Max area of opening in gypsum board is 169 sq in. (1090 cm²) with a max dimension of 13 in. (330 mm).

The F and FH Ratings of the firestop system are equal to the hourly fire rating of the wall in which it is installed.
2. **Metallic Sleeve** - Nom 13 by 13 in. (330 by 330 mm) (or smaller) steel sleeve fabricated from min 0.016 in. (0.41 mm) (30 gauge) (or heavier) galv sheet steel and having a 1 in. (25 mm) lap along the longitudinal seam. Steel sleeve friction fit within opening and installed flush with both surfaces of wall.
3. **Steel Duct** - Max 12 by 12 in. (305 by 305 mm) No. 26 gauge (or heavier) steel duct to be installed either concentrically or eccentrically within the opening. The annular space between the steel duct and the periphery of the opening shall be min 1/4 in. (6 mm) to max 3/4 in. (19 mm). The duct shall be constructed and reinforced in accordance with SMACNA construction standards. Steel duct to be rigidly supported on both sides of wall assembly.



Specified Technologies Inc. 210 Evans Way Somerville, NJ 08876

Reproduced courtesy of Underwriters Laboratories, Inc.
Created or Revised: January 18, 2017

(800)992-1180 • (908)526-8000 • FAX (908)231-8415 • E-Mail:techserv@stifirestop.com • Website:www.stifirestop.com



W-L-7252
PAGE 1 OF 2

4. **Firestop System** - The firestop system shall consist of the following items:

- A. **Packing Material** - Min 4 pcf (64 kg/m³) mineral wool batt insulation firmly packed into sleeved opening as a permanent form. Packing material to extend throughout thickness of wall except for a 1-1/4 in. (32 mm) deep recess on the finished side of wall to accommodate fill material.
- B. **Fill, Void or Cavity Material*** - Min 1-1/4 (32 mm) thickness of fill material applied within sleeve, flush with finished surface of wall.

SPECIFIED TECHNOLOGIES INC - SpecSeal Series SSS Sealant or SpecSeal LCI Sealant

* Indicates such products shall bear the UL or cUL Certification Mark for jurisdictions employing the UL or cUL Certification (such as Canada), respectively.



Specified Technologies Inc. 210 Evans Way Somerville, NJ 08876

Reproduced courtesy of Underwriters Laboratories, Inc.
Created or Revised: January 18, 2017

(800)992-1180 • (908)526-8000 • FAX (908)231-8415 • E-Mail:techserv@stifirestop.com • Website:www.stifirestop.com



W-L-7252
PAGE 2 OF 2