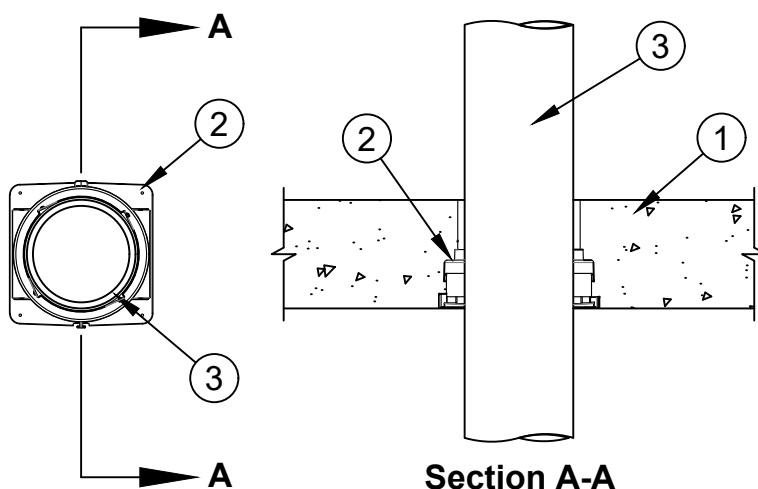




System No. F-A-1110

ANSI/UL1479 (ASTM E814)	CAN/ULC S115
F Ratings - 2 and 3 Hr (See Items 1 and 1A)	F Ratings - 2 and 3 Hr (See Items 1 and 1A)
T Ratings - 0 and 1/4 Hr (See Items 1 and 1A)	FT Ratings - 0 and 1/4 Hr (See Items 1 and 1A)
L Rating At Ambient - Less Than 1 CFM/ft ² (See Items 3, 4 and 6)	FH Ratings - 2 and 3 Hr (See Items 1 and 1A)
L Rating At 400° F - Less Than 1 CFM/ft ² (See Items 3, 4 and 6)	FTH Ratings - 0 and 1/4 Hr (See Items 1 and 1A)
W Rating - Class 1 (See Items 4 and 6)	L Rating At Ambient - Less Than 5.1 L/s/m ² (See Items 3, 4 and 6)
	L Rating At 204° C - Less Than 5.1 L/s/m ² (See Items 3, 4 and 6)



- Floor Assembly** - Min 2-1/2 in. (64 mm) thick reinforced lightweight or normal weight (100-150 pcf or 1600-2400 kg/m³) concrete floor. When concrete thickness is min 4-1/2 in. (114 mm), the F and FH Ratings are 3 hr and the T, FT and FTH Ratings are 1/4 hr. When concrete thickness is min 2-1/2 in. (64 mm), the F and FH Ratings are 2 hr and the T, FT and FTH Ratings are 0 hr.
 - 1A. Floor Assembly** - (Not Shown) - As an alternate to Item 1, the fire rated unprotected concrete and steel floor assembly shall be constructed of the material and in the manner specified in the individual D900 Series designs in the UL Fire Resistance Directory and as summarized below:
 - Concrete** - Min 2-1/2 in. (64 mm) thick reinforced lightweight or normal weight (100-150 pcf or 1600-2400 kg/m³) concrete topping, as measured from the top plane of the steel floor units. When concrete thickness is min 4-1/2 in. (114 mm), the F and FH Ratings are 3 hr and the T, FT and FTH Ratings are 1/4 hr. When concrete thickness is min 2-1/2 in. (64 mm), the F and FH Ratings are 2 hr and the T, FT and FTH Ratings are 0 hr.
 - Steel Floor and Form Units*** - Composite or non-composite max 3 in. (76 mm) deep galv steel fluted units as specified in the individual Floor-Ceiling Design.
 - Firestop Device*** - Cast in place firestop device permanently embedded during the concrete pour or grouted into the concrete assembly in accordance with the accompanying installation instructions. The throat of the firestop device may be cut flush with the top surface of the floor or extend beyond the top surface of the floor.
- SPECIFIED TECHNOLOGIES INC** - SpecSeal CD201, CD201C, CD202, CD201GW, CD301, CD301C, CD302, CD301GW, CD401, CD402, CD401GW, CD601 or CD601GW Cast In Firestop Device



Specified Technologies Inc. 210 Evans Way Somerville, NJ 08876

Reproduced courtesy of Underwriters Laboratories, Inc.
Created or Revised: January 16, 2024



(800)992-1180 • (908)526-8000 • FAX (908)231-8415 • E-Mail:techserv@stifirestop.com • Website:www.stifirestop.com

F-A-1110
PAGE 1 OF 3

2A. **Firestop Device*** - (Not Shown) - When Item 1A is used, a steel deck adapter kit consisting of steel plates and a nonmetallic extension tube shall be used in conjunction with Item 2. The deck adapter shall be installed in accordance with the accompanying installation instructions.

SPECIFIED TECHNOLOGIES INC - SpecSeal CD201DK, CD301DK, CD401DK, or CD601DK Cast In Firestop Device Deck Adapter

2B. **Firestop Device*** - (Not Shown) - When the concrete floor slab or concrete topping thickness over steel deck exceeds 8 in. (203 mm), a nonmetallic extension tube shall be used in conjunction with Item 2. The extension tube shall be installed in accordance with the accompanying installation instructions. The extension tube may be cut flush with the top surface of the floor or extend beyond the top surface of the floor.

SPECIFIED TECHNOLOGIES INC - SpecSeal CD201EK, CD301EK, CD401EK, CD601EK or CD601X Cast In Firestop Device Extension

3. **Through Penetrant** - One metallic pipe, tube or conduit to be centered within the firestop system. Pipe, conduit or tube to be rigidly supported on both sides of the floor assembly. The following types and sizes of through penetrant may be used:

- A. **Steel Pipe** - Nom 6 in. (152 mm) diam (or smaller) Schedule 10 (or heavier) steel pipe.
- B. **Iron Pipe** - Nom 6 in. (152 mm) diam (or smaller) cast or ductile iron pipe.
- C. **Conduit** - Nom 6 in. (152 mm) rigid steel conduit or steel electrical metallic tubing (EMT).
- D. **Copper Pipe or Tubing** - Nom 4 in. (102 mm) diam (or smaller) Type M (or heavier) copper tubing or Regular (or heavier) copper pipe.
- E. **Copper Pipe or Tubing** - Nom 6 in. (152 mm) diam (or smaller) Type L (or heavier) copper tubing or Regular (or heavier) copper pipe.

Nom Pipe Diam (a)	Firestop Device
1-1/2 or 2 in. (38 or 51 mm)	CD201, CD201C, CD202, CD201GW
2-1/2 or 3 in. (64 or 76 mm)	CD301, CD301C, CD302, CD301GW
3-1/2 or 4 in. (89 or 102 mm)	CD401, CD402, CD401GW
6 in. (152 mm)	CD601, CD601GW

(a) When metallic pipe, conduit, or tubing with diam smaller than those shown in the table above are used, packing material and/or fill material shall be installed into the device as described in Items 4 and 5. L Ratings for these penetrants only apply when the fill material is used. Otherwise, the L Rating for each firestop device is less than 1 CFM/ft² (5.1 L/s/m²) at ambient and 400F.

4. **Packing Material** - (Not Shown) - When required under Item 3, min 4 in. (102 mm) thickness of min 4 pcf (64 kg/m³) mineral wool firmly packed into device flush with top edge of device (Item 2), and extending a min 1 in. (25 mm) below the top surface of the floor. When W Ratings for penetrants are required, min 4 in. (102 mm) thickness of min 4 pcf (64 kg/m³) mineral wool firmly packed into device recessed 1/4 in. (6 mm) from top edge of device (Item 2) to accommodate sealant (Item 6). When L Ratings for penetrants with a diam smaller than those shown in the table above are required, recess mineral wool 1/4 in. (6 mm) from top edge of device to accommodate sealant (Item 6).

W Rating does not require installation of packing material when SpecSeal CD201GW, CD301GW, CD401GW or CD601GW Cast In Firestop Devices are used.

5. **Fill, Void, or Cavity Material* - Putty** - (Not Shown) - When required under Item 3, as an option to Item 4, min 1 in. (25 mm) depth of fill material applied to fill annulus between penetrant and throat of firestop device at top of floor.

SPECIFIED TECHNOLOGIES INC - SpecSeal Putty

6. **Fill, Void, or Cavity Material*** - (Optional, Not Shown) - To achieve W Ratings for penetrants or to achieve L Ratings for penetrants with a diam smaller than those shown in the table of Item 3, apply min 1/4 in. (6 mm) depth of sealant atop packing material (Item 4) flush with top edge of device (Item 2).

SPECIFIED TECHNOLOGIES INC - SpecSeal SIL300 Sealant or SpecSeal SIL300SL Sealant

W Rating does not require installation of fill, void or cavity material when SpecSeal CD201GW, CD301GW, CD401GW or CD601GW Cast In Firestop Devices are used.



Specified Technologies Inc. 210 Evans Way Somerville, NJ 08876

Reproduced courtesy of Underwriters Laboratories, Inc.

Created or Revised: January 16, 2024

(800)992-1180 • (908)526-8000 • FAX (908)231-8415 • E-Mail:techserv@stifirestop.com • Website:www.stifirestop.com



F-A-1110
PAGE 2 OF 3

7. **Pipe Tee Fitting System** - (Optional, Not Shown) - For use with Iron Pipe (Item 3B) only, One nom 6 in. (152 mm) diam (or smaller) PVC TESTRITE TEE Fitting (matched to penetrant diameter). The PVC TESTRITE TEE Fitting is secured to metallic penetrant (Item 3B) with compression type pipe coupling elastomeric gasket with stainless steel jacket and stainless steel band clamps for use in vented (drain, waste or vent) iron pipe systems. Installed (Item 3B) penetrant shall extend a minimum of 6 in. (152 mm) above the surface of the floor and minimum 12 in. (302 mm) below the bottom surface of the floor above assembly.

* Indicates such products shall bear the UL or cUL Certification Mark for jurisdictions employing the UL or cUL Certification (such as Canada), respectively.

+Bearing the UL Listing Mark



Specified Technologies Inc. 210 Evans Way Somerville, NJ 08876

Reproduced courtesy of Underwriters Laboratories, Inc.

Created or Revised: January 16, 2024

(800)992-1180 • (908)526-8000 • FAX (908)231-8415 • E-Mail:techserv@stifirestop.com • Website:www.stifirestop.com



F-A-1110
PAGE 3 OF 3