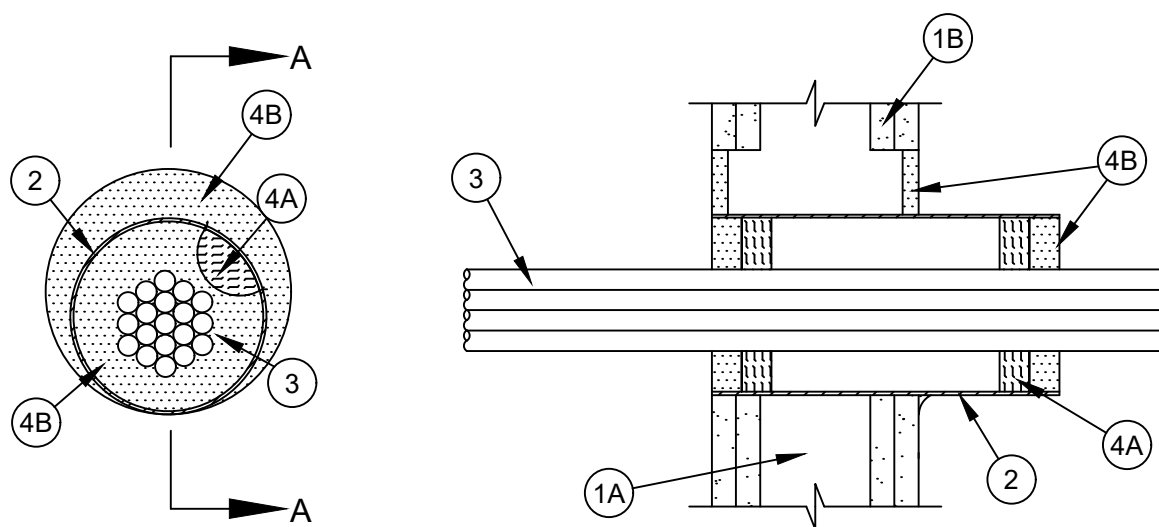




ANSI/UL1479 (ASTM E814)	CAN/ULC S115
F Ratings - 1 and 2 Hr (See Item 1)	F Ratings - 1 and 2 Hr (See Item 1)
T Rating - 3/4 Hr	FT Rating - 3/4 Hr
L Rating at Ambient - Less Than 1 CFM/sq ft (See Items 3 and 4B)	FH Ratings - 1 and 2 Hr (See Item 1)
L Rating at 400°F - Less Than 1 CFM/sq ft (See Items 3 and 4B)	FTH Rating - 3/4 Hr
	L Rating at Ambient - Less Than 5.1 L/S/m ² (See Items 3 and 4B)
	L Rating at 204°F - Less Than 5.1 L/S/m ² (See Items 3 and 4B)



Section A-A

1. **Wall Assembly** -- The 1 or 2 hr fire rated gypsum board/stud wall assembly shall be constructed of the materials and in the manner specified in the individual U300, V300, U400, V400, or W400 Series Wall and Partition Designs in the UL Fire Resistance Directory and shall include the following construction features:

- A. **Studs** -- Wall framing may consist of either wood studs or steel channel studs. Wood studs to consist of nom 2 by 4 in. (51 by 102 mm) lumber spaced 16 in. (406 mm) OC. Steel studs to be min 3-1/2 in. (89 mm) wide and spaced max 24 in. (610 mm) OC.
- B. **Gypsum Board*** -- Thickness, number of layers, fastener type and sheet orientation shall be as specified in the individual U300, V300, U400, V400 or W400 Series Design in the UL Fire Resistance Directory. Max diam of opening is 6-1/2 in. (165 mm) when sleeve (Item 2) is installed. Max diam of opening is 4 in. (102 mm) when sleeve is not used.

The hourly F and FH rating of the firestop system are equal to the hourly fire rating of the wall assembly in which it is installed.

2. **Steel Sleeve -- (Optional)** -- Nom 4 in. (102 mm) diam (or smaller) steel electrical metallic tubing (EMT), steel conduit, Schedule 5 (or heavier) steel pipe sleeve or min 0.016 in. thick (0.41 mm, No. 28 ga) galv steel sleeve installed flush with wall surfaces. The annular space between the steel sleeve and periphery of opening shall be min 0 in. (continuous point contact) to max 2 in. (51 mm). When Schedule 5 steel pipe or EMT is used, sleeve may be installed flush with or extend up to 18 in. (46 cm) beyond one or both wall surfaces. Steel sleeve may be installed at an angle not greater than 45 degrees from perpendicular. Schedule 5 steel pipe or EMT sleeves may extend continuously beyond one wall surface. Sleeve to be



Specified Technologies Inc. 210 Evans Way Somerville, NJ 08876

Reproduced courtesy of Underwriters Laboratories, Inc.
Created or Revised: October 4, 2022



rigidly supported when extending from the wall surfaces.

3. Cables -- Aggregate cross-sectional area of cables in opening when a steel sleeve (Item 2) is not used, or within steel sleeve to be max 48 percent of the aggregate cross-sectional area of the opening or sleeve. Cables to be bundled and rigidly supported on both sides of wall assembly. When the sleeve is installed, the annular space between the cables and the sleeve shall be min 0 in. (point contact) to max 1-1/2 in. (38 mm). When the sleeve (Item 2) is not used, the annular space between the cables and the opening shall be a min 0 in. (point contact) to a max 1/2 in. (13 mm). When L Ratings for penetrants are required, min separation between cables and between cables and periphery of opening or the sleeve os 1/8 in. (3 mm). Cable bundle, using cables described below, may penetrate the wall at an angle not greater than 45 degrees. Any combination of the following types and sizes of copper conductor cable may be used:

- A. Max 200 pair No. AWG (or smaller) copper conductor cable with polyvinyl chloride (PVC) or plenum-rated jacketing and insulation.
- B. Max 3/C No. 2/0 AWG (or smaller) aluminum or copper conductor service entrance cable with PVC insulation and jacket.
- C. Max 3/C No. 8 AWG (or smaller) nonmetallic sheathed (Romex) cable with copper conductors, PVC insulation and jacket.
- D. Max 7/C No. 2/0 AWG (or smaller) multiconductor power and control cables with XLPE or PVC insulation and XLPE or PVC jacket.
- E. Max RG/U (or smaller) coaxial cable with fluorinated ethylene or plenum-rated insulation and jacketing.
- F. Max 62.5/48 fiber optic cable with PVC or plenum-rated insulation and jacketing.
- G. Max 4 pair No. 24 AWG (or smaller) copper conductor data cable with PVC or plenum-rated insulation and jacket.
- H. Max 4/C No. 2/0 aluminum or copper conductor aluminum or steel Metal-Clad# or Armored-Clad# cable.
- I. Max 3/4-in. (19 mm) diam copper ground cable with or without a PVC jacket.

4. Firestop System -- The firestop system shall consist of the following:

- A. **Packing Material** -- When required (See table in Item 4B), min 1 in. (25 mm) thickness of min 4.0 pcf (64 kg/m³) mineral wool batt insulation firmly packed into each end of sleeve (Item 2) as a permanent form. Packing material to be recessed from each end of sleeve as required to accommodate the required thickness of fill material. When the sleeve is not used, the packing material is not required.
- B. **Fill, Void or Cavity Material* - Sealant or Putty** -- When sleeve (Item 2) is used, fill material applied to appropriate thickness within steel sleeve as shown in the table below, flush with edges of steel sleeve on both surfaces of wall. Min 1/2 in. (13 mm) thickness of fill material installed into annular space between sleeve and wall flush with both surfaces of the wall. Min 1/2 in. (13 mm) diam bead of sealant or "rope" of putty shall be applied around the perimeter of the sleeve on each side of the wall when sleeve extends beyond surface of wall and is installed at continuous point contact. When sleeve is not used, a min 5/8 in. (16 mm) thickness of fill material shall be applied within the annulus, flush with both surfaces of the wall. At point contact location, apply min 1/4 in. (6 mm) diam bead of fill material at cable/gypsum board interface on both sides of the wall.

Sealant or Putty Type	Thickness, In. (mm)	Packing Material Required
SpecSeal Series SSS Sealant or LCI Sealant	1/2 in. (13)	Yes
SpecSeal Series SSS Sealant or LCI Sealant	1 in. (25)	No
SpecSeal Putty	1 in. (25)	No

SPECIFIED TECHNOLOGIES INC -- SpecSeal Series SSS Sealant, SpecSeal LCI Sealant or SpecSeal Putty

L Ratings apply only when SpecSeal Series SSS or SpecSeal LCI Sealants are used.

* Indicates such products shall bear the UL or cUL Certification Mark for jurisdictions employing the UL or cUL Certification (such as Canada), respectively.



Specified Technologies Inc. 210 Evans Way Somerville, NJ 08876

Reproduced courtesy of Underwriters Laboratories, Inc.

Created or Revised: October 4, 2022

(800)992-1180 • (908)526-8000 • FAX (908)231-8415 • E-Mail:techserv@stifirestop.com • Website:www.stifirestop.com



W-L-3210
PAGE 2 OF 2