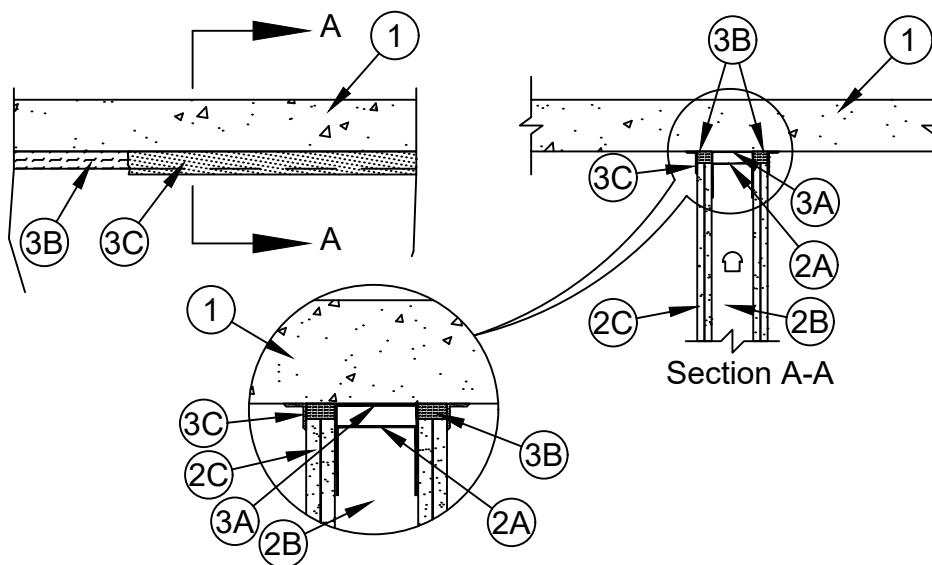




System No. HW-D-0044

ANSI/UL2079	CAN/ULC S115
Assembly Ratings - 1, 2, 3 and 4 Hr (See Item 2)	F Ratings - 1, 2, 3, and 4 Hr (See Item 2)
Nominal Joint Widths - 1-1/2 and 2-1/2 In. (See Item 3)	FT Ratings - 1, 2, 3, and 4 Hr (See Item 2)
Class II Movement Capabilities - 40 or 50% Compression or Extension (See Item 3)	FH Ratings - 1, 2, 3, and 4 Hr (See Item 2)
L Rating At Ambient - Less Than 1 CFM/Lin Ft	FTH Ratings - 1, 2, 3, and 4 Hr (See Item 2)
L Rating At 400 F - Less Than 1 CFM/Lin Ft	Nominal Joint Widths - 1-1/2 and 2-1/2 In. (See Item 3)
	Class II Movement Capabilities - 40 or 50% Compression or Extension (See Item 3)
	L Rating At Ambient - Less Than 1 CFM/Lin Ft
	L Rating At 400 F - Less Than 1 CFM/Lin Ft



1. **Floor Assembly** - Min 4-1/2 in. (114 mm) thick steel-reinforced lightweight or normal weight (100-150 pcf or 1600-2400 kg/m3) structural concrete.
2. **Wall Assembly** - 1, 2, 3 or 4 hr fire-rated gypsum board/stud wall assembly shall be constructed of the materials and in the manner described in the individual U400, V400 or W400 Series Wall and Partition Design in the UL Fire Resistance Directory and shall include the following construction features:
 - A. **Steel Floor and Ceiling Runners** - Floor and ceiling runners of wall assembly shall consist of galv steel channels sized to accommodate steel studs (Item 2B). When deflection channel (Item 3A) is used, flange height of ceiling runner is to be equal to or greater than flange height of deflection channel and the ceiling runner is to nest within the deflection channel with a 3/4 to 1 in. (19 to 25 mm) gap maintained between the top of the ceiling runner and the top of the deflection channel. When deflection channel is not used, flange height of ceiling runner shall be min 3/4 in. (19 mm) greater than nom joint width. Ceiling runner is secured to concrete floor slab with steel masonry anchors spaced max 24 in. (610 mm) OC.



Specified Technologies Inc. 210 Evans Way Somerville, NJ 08876

Reproduced courtesy of Underwriters Laboratories, Inc.
Created or Revised: July 5, 2023

(800)992-1180 • (908)526-8000 • FAX (908)231-8415 • E-Mail:techserv@stifirestop.com • Website:www.stifirestop.com



- A1. **Light Gauge Framing* - Slotted Ceiling Runner** - When nom joint width is less than or equal to 1-3/4 in. (45 mm), slotted ceiling runner may be used as an alternate to the ceiling runner in Item 2A. Slotted ceiling runner to consist of galv steel channel with slotted flanges sized to accommodate steel studs (Item 2B). Ceiling runner secured to concrete floor slab with steel masonry anchors spaced max 24 in. (610 mm) OC. When slotted ceiling runner is used, deflection channel (Item 3A) shall not be used.

BRADY CONSTRUCTION INNOVATIONS INC, DBA SLIPTRACK SYSTEMS - SLP-TRK

CEMCO, LLC - CST

CLARKDIETRICH BUILDING SYSTEMS - Type SLT, SLT-H

MARINO/WARE, DIV OF WARE INDUSTRIES INC - Type SLT

METAL-LITE INC - The System

RAM SALES L L C - RAM Slotted Track

SCAFCO STEEL STUD MANUFACTURING CO

TELLING INDUSTRIES L L C - True-Action Deflection Track

- A2. **Light Gauge Framing* - Vertical Deflection Ceiling Runner** - When nom joint width is less than or equal to 1 in. (25 mm), vertical deflection ceiling runner may be used as an alternate to the ceiling runner in Items 3A and 3A1., Vertical deflection ceiling runner to consist of galv steel channel with slotted vertical deflection clips mechanically fastened within runner. Slotted clips, provided with step bushings, for permanent fastening of steel studs. Vertical deflection ceiling runner secured to concrete floor slab with steel masonry anchors spaced max 24 in. (610 mm) OC. When vertical deflection ceiling runner is used, deflection channel (Item 4A) shall not be used.

- A3. **Light Gauge Framing* - Notched Ceiling Runner** - As an alternate to the ceiling runners in Items 2A through 2A3, notched ceiling runners to consist of C-shaped galv steel channel with notched return flanges sized to accommodate steel studs (Item 2B). Notched ceiling runner secured to concrete floor slab with steel masonry anchors spaced max 24 in. (610 mm) OC. When notched ceiling runner is used, deflection channel (Item 3A) shall not be used.

OLMAR SUPPLY INC - Type SCR

- A4. **Light Gauge Framing* - Vertical Deflection Clip*** - (Optional) - Steel clips can be used in conjunction with steel studs (Item 2B), ceiling runner (Item 2A) or deflection channel (Item 3A). Clips installed over the top of studs and inserted within the ceiling runner or deflection channel. Clip shall be secured to the ceiling runner or deflection channel with No. 8 self drilling, self tapping steel fasteners through holes provided within the clip. Clip may be secured to the stud with No. 6 pan head steel screw through holes provided within the clip. As an alternate, the legs of the clip may be installed over the top of the stud without attachment in accordance with manufacturer's installation instructions.

FLEX-ABILITY CONCEPTS L L C - Three Legged Dog Deflection Clip

- A5. **Steel Framing Members* - Sound Isolation Clips** - (Not Shown, For Max 2 Hr Rating) - As an alternate attachment means for the ceiling runner to the underside of the floor when no deflection channel (Item 3A) is used, sound isolation clips installed in accordance with the accompanying installation instructions. Sound isolation clip installed through nom 1 in. (25 mm) diam hole in ceiling runner and attached to top of ceiling runner using four min No. 8 by 1/2 in. (13 mm) long self-tapping galv steel screws. Sound isolation clips to be installed adjacent to every stud location but not more than 24 in. (610 mm) OC and attached to the underside of floor assembly using min 3/16 in. (5 mm) diam by 2-1/2 in. (64 mm) long steel masonry anchors.

PAC INTERNATIONAL L L C - Type RSIC-U-HD

- B. **Studs** - Steel studs to be min 3-1/2 in. (89 mm) wide. Studs cut 1/2 to 1 in. (13 to 25 mm) less in length than assembly height with bottom nesting in and secured to floor runner. When deflection channel (Item 3A) is used, steel studs attached to ceiling runner (Item 2A) with sheet metal screws located 1/2 in. (13 mm) below the bottom to the deflection channel. When deflection channel is not used, studs to nest in ceiling runner without attachment. When slotted ceiling runner (Item 2A1) is used, steel studs secured to slotted ceiling runner with No. 8 by 1/2 in. (13 mm) long wafer head steel screws at mid-height of slot on each side of wall. When vertical deflection ceiling runner (Item 2A2) is used, steel studs secured to slotted vertical deflection clips, through the bushings, with steel screws at mid-height of each slot. Stud spacing not to exceed 24 in. (610 mm) OC.

- C. **Gypsum Board*** - Gypsum board sheets installed to a min total 5/8 in., 1-1/4 in., 1-1/2 in. or 2 in. (16, 32, 38 or 51 mm) thickness on each side of wall for 1, 2, 3 or 4 hr rated assemblies, respectively. Wall to be constructed as specified in the individual U400, V400 or W400 Series Design in the UL Fire Resistance Directory, except that a max 1 or 2-1/2 in. (25 or 64 mm) gap (See Item 3) shall be maintained between the top of the gypsum board and the lower surface of the floor. The screws attaching the gypsum board to the studs along the top of the wall shall be located 1 in. (25 mm) below the bottom of the ceiling runner. No gypsum board attachment screws shall be driven into the ceiling runner or into the optional deflection channel.

The hourly fire rating of the joint system is equal to the hourly fire rating of the wall.



Specified Technologies Inc. 210 Evans Way Somerville, NJ 08876

Reproduced courtesy of Underwriters Laboratories, Inc.

Created or Revised: July 5, 2023

(800)992-1180 • (908)526-8000 • FAX (908)231-8415 • E-Mail:techserv@stifirestop.com • Website:www.stifirestop.com



HW-D-0044
PAGE 2 OF 3

3. **Joint System - Max separation between bottom of floor and top of gypsum board (at time of installation of joint system) is 2-1/2 in. (64 mm) for 1 and 2 hr ratings and 1 in. (25 mm) for 3 and 4 hr ratings. The joint system is designed to accommodate a max 50 percent compression or extension from its installed width for max 1-1/2 in. (38 mm) wide joints and a max 40 percent compression or extension from its installed width for max 2-1/2 in. (64 mm) wide joints.**

The joint system shall consist of forming and fill materials, with or without a deflection channel (Item 3A), as follows:

- A. **Deflection Channel** - (Optional) - Max 3 in. (76 mm) deep min 24 gauge galv steel channel sized to accommodate ceiling runner (Item 2A). Deflection channel secured to concrete floor slab with steel masonry anchors spaced max 24 in. (610 mm) OC. The ceiling runner (Item 2A) is installed within the deflection channel to maintain a 1/2 to 3/4 in. (13 to 19 mm) gap between the top of the ceiling runner and the top of the deflection channel. The ceiling runner nests inside the deflection channel without attachment.
- B. **Forming Material*** - Sections of min 4 pcf (64 kg/m³) density mineral wool batt compressed 50 percent in thickness and installed cut edge first to completely fill the gap between the top of the gypsum board and the bottom of the concrete floor. When sound isolation clips (Item 2A6) are used, the space between the top of the ceiling runner and the underside of the floor shall be tightly packed with mineral wool batt insulation. The forming material shall be installed flush with both surfaces of wall.

INDUSTRIAL INSULATION GROUP L L C - MinWool-1200 Safing

ROCK WOOL MANUFACTURING CO - Delta Board

ROCKWOOL MALAYSIA SDN BHD - Safe

ROCKWOOL - Safe

THERMAFIBER INC - SAF

- C. **Fill, Void or Cavity Material* - Sealant** - Min 1/16 in. (1.6 mm) dry thickness (1/8 in. or 3.2 mm wet thickness) of fill material spray applied on each side of the wall between the top of the wall and the bottom of the floor, and overlap a min 1/2 in. (13 mm) onto gypsum board on both sides of wall. Additional 1/16 in. (1.6 mm) dry thickness (1/8 in. or 3.2 mm wet thickness) of fill material shall overlap a min 1/2 in. (13 mm) onto the floor on both sides of wall.

SPECIFIED TECHNOLOGIES INC - SpecSeal AS200 Elastomeric Spray

* Indicates such products shall bear the UL or cUL Certification Mark for jurisdictions employing the UL or cUL Certification (such as Canada), respectively.



Specified Technologies Inc. 210 Evans Way Somerville, NJ 08876

Reproduced courtesy of Underwriters Laboratories, Inc.

Created or Revised: July 5, 2023

(800)992-1180 • (908)526-8000 • FAX (908)231-8415 • E-Mail:techserv@stifirestop.com • Website:www.stifirestop.com



HW-D-0044
PAGE 3 OF 3