

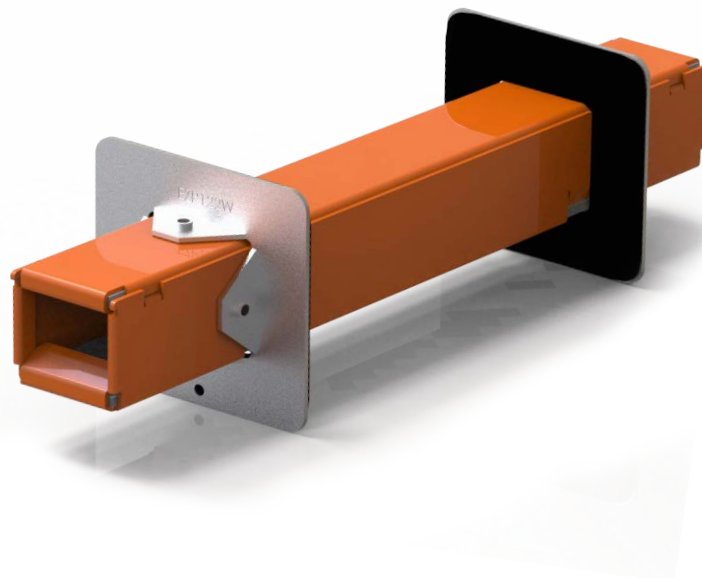
# EZ Path® Series 22 Fire Rated Pathway



The EZ Path® Series 22 Fire Rated Pathway is a pathway device designed to allow cables to penetrate fire-rated walls without the need for firestopping. This device features a built-in fire sealing system that automatically adjusts to the amount of cables installed. Once installed in a fire barrier, cables can be easily added or removed at any time without the need to remove or reinstall firestopping materials.

The EZ Path® Series 22 Fire Rated Pathway consists of an enclosed heavy gauge galvanized steel pathway lined with intumescent material engineered for rapid expansion when exposed to fire or high temperatures, quickly sealing the pathway and preventing the passage of flames and smoke.

EZ Path® Series 22 Fire Rated Pathway is painted safety orange for easy identification. Its compact square profile allows a maximum number of cables to be installed in a relatively small area. The pathway measures approximately 1.5" x 1.5" (37 mm) and is 10.5" (267 mm) long.



## Applications

EZ Path® Series 22 Fire Rated Pathway is designed for easy installation in walls. Tested and approved cable capacities range from 0 to 100% visual fill. EZ Path® Series 22 Fire Rated Pathway when installed with provided wall plates is designed for new cable installations. In these installations, the device does not require mechanical attachment to either the wall or the wall framing and may be installed after the wallboard has been installed. EZ Path® Series 22's split body design also allows the device to be easily disassembled and installed around previously installed cables in existing construction.

EZ Path® Series 22 Fire Rated Pathway provides exceptional cable capacity. A single unit installed in a wall has an equal cable carrying capacity of a 2" (51 mm) diam sleeve utilizing typical putty firestop systems (35% cable loading).

## Specifications

All data, video, and communications cable bundles shall utilize an enclosed fire-rated pathway device wherever said cables penetrate rated walls. The fire-rated pathway shall contain a built-in fire sealing system sufficient to maintain the hourly fire rating of the barrier being penetrated. The self-contained sealing system shall automatically adjust to the installed cable loading and shall permit cables to be installed, removed, or retrofitted without the need to remove or reinstall firestop materials. The pathway shall be UL Certified and tested to the requirements of ASTM E814 (UL1479) and CAN/ULC-S115.

### Specified Divisions

Division 7	07 84 13	Penetration Firestopping
Division 26	26 00 00	Electrical
Division 27	27 00 00	Communications

## Features & Benefits

- Easy to install
- No firestopping required
- Firestopped at all stages of use
- UL rested - low leakage
- UL Certified for the complete range of its capacity
- Match the capacity of a 2" (51 mm) conduit
- Acoustically tested

## PHYSICAL PROPERTIES

Shell Composition	0.059" (1.5 mm) Galvanized Steel
Cable Loading Area	1-1/4 sq in (nom.) [8.06 sq cm]
Allowable Cable Fill	0 to 100% Visual
Fire Resistance Ratings	1, 2, 3 and 4 Hour
Expansion Begins	350°F (177°C)
Volume Expansion	30x
Sample Cable Volume Cat 6 (0.236" OD)	15 (nom.)
In Service Temperature	-10°F (-23°C) to 120°F (49°C)
Storage Temperature	Less than 120°F (49°C)
Shelf Life	No Limit

# EZ Path® Series 22 Fire Rated Pathway



## Performance

EZ Path® Series 22 Fire Rated Pathway is UL Tested and Certified in accordance with ASTM E814 (UL1479) and CAN/ULC-S115. Systems are available for common wall construction with ratings up to and including 4 hours.



## Limitations

This product has been designed to be safe with plastics. It has been used extensively and successfully with various types of plastic pipes, tubes, and plastic cable insulations. Variations in these materials, however, make it impossible to guarantee compatibility. STI strongly recommends that the user consults with the pipe, tubing, or cable manufacturer in question regarding any known sensitivities or potential restrictions before applying this product.

## Cable Installation

Cables may easily be added or removed at any time without removing or reinstalling the fire seal. Cables may be added individually or in bundles. Wrapping ends with a low-friction tape facilitates cable insertion. A self-adjusting cable throat automatically adjusts to accommodate the cable bundle as it passes through the pathway.

## Maintenance

No maintenance of the pathway is normally required.

## System Selection

To find your firestop system or create a submittal, visit <https://systems.stifirestop.com/> to use System Search & Submittal Builder. You may also visit the [UL Online Certifications Directory/UL Product iQ™](#) for complete listings. (Firestop Systems).

## Technical Service

Specified Technologies Inc. provides toll free technical support to assist in product selection and appropriate installation design. UL System designs suitable for submittal or specification purposes are available on request. A complete library of technical information is provided at the company's website [www.stifirestop.com](http://www.stifirestop.com) including Safety Data Sheets (SDS's).

## Precautionary Information

The use of this device is subject to local, regional and national codes. Consult the local Building Code Official or Authority Having Jurisdiction regarding any regional or local requirements that might influence the selection or use of this product.

## Availability

EZ Path® Products are available from Specified Technologies Inc. (STI) authorized distributors. For additional purchasing and technical information or for the names and locations of the nearest representative and/or distributor, regarding this and other Specified Technology products, please call 1-800-992-1180 or visit [www.stifirestop.com](http://www.stifirestop.com).

## ORDERING INFORMATION

Catalog Number	UPC Number	Description	(UOM) Qty.	Case Qty.	Weight (Each)
EZD22	730573000229	Device, full kit includes wall plates and labels	1	6	1.91 lbs (0.86 kg)

IMPORTANT NOTICE: ALL STATEMENTS, TECHNICAL INFORMATION, AND RECOMMENDATIONS CONTAINED HEREIN ARE BASED UPON TESTING BELIEVED TO BE RELIABLE, BUT THE ACCURACY AND COMPLETENESS THEREOF IS NOT GUARANTEED.

STI TYPICALLY WARRANTIES ITS PRODUCTS FOR ONE FULL YEAR. FOR COMPLETE DETAILS OF OUR STANDARD WARRANTY, PLEASE VISIT [WWW.STIFIRESTOP.COM/LEGAL/WARRANTY](http://WWW.STIFIRESTOP.COM/LEGAL/WARRANTY)

MADE IN THE USA - © 2021 SPECIFIED TECHNOLOGIES INC.

